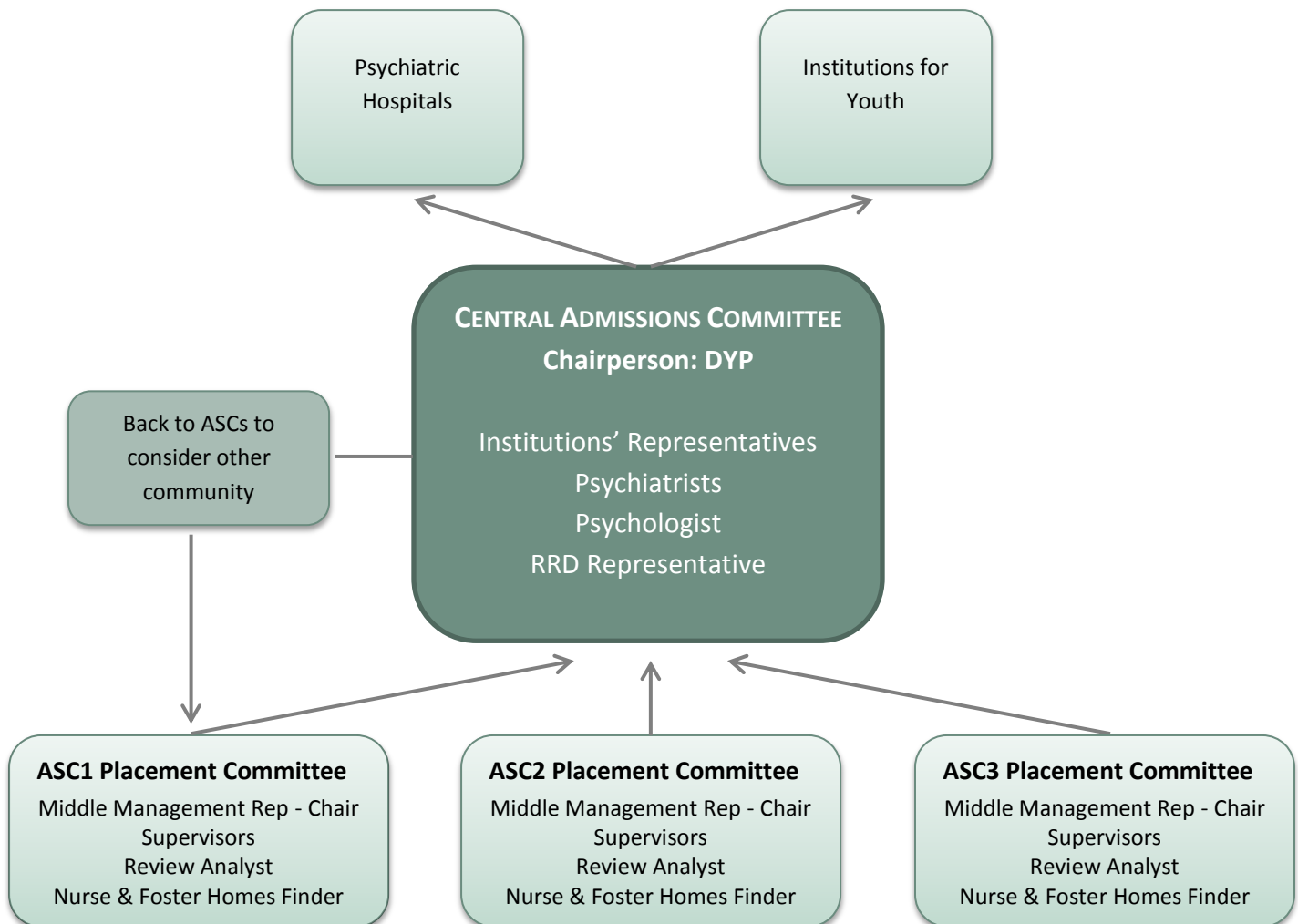


**FIGURE 2: STRUCTURE OF CENTRALIZED ADMISSIONS COMMITTEE**

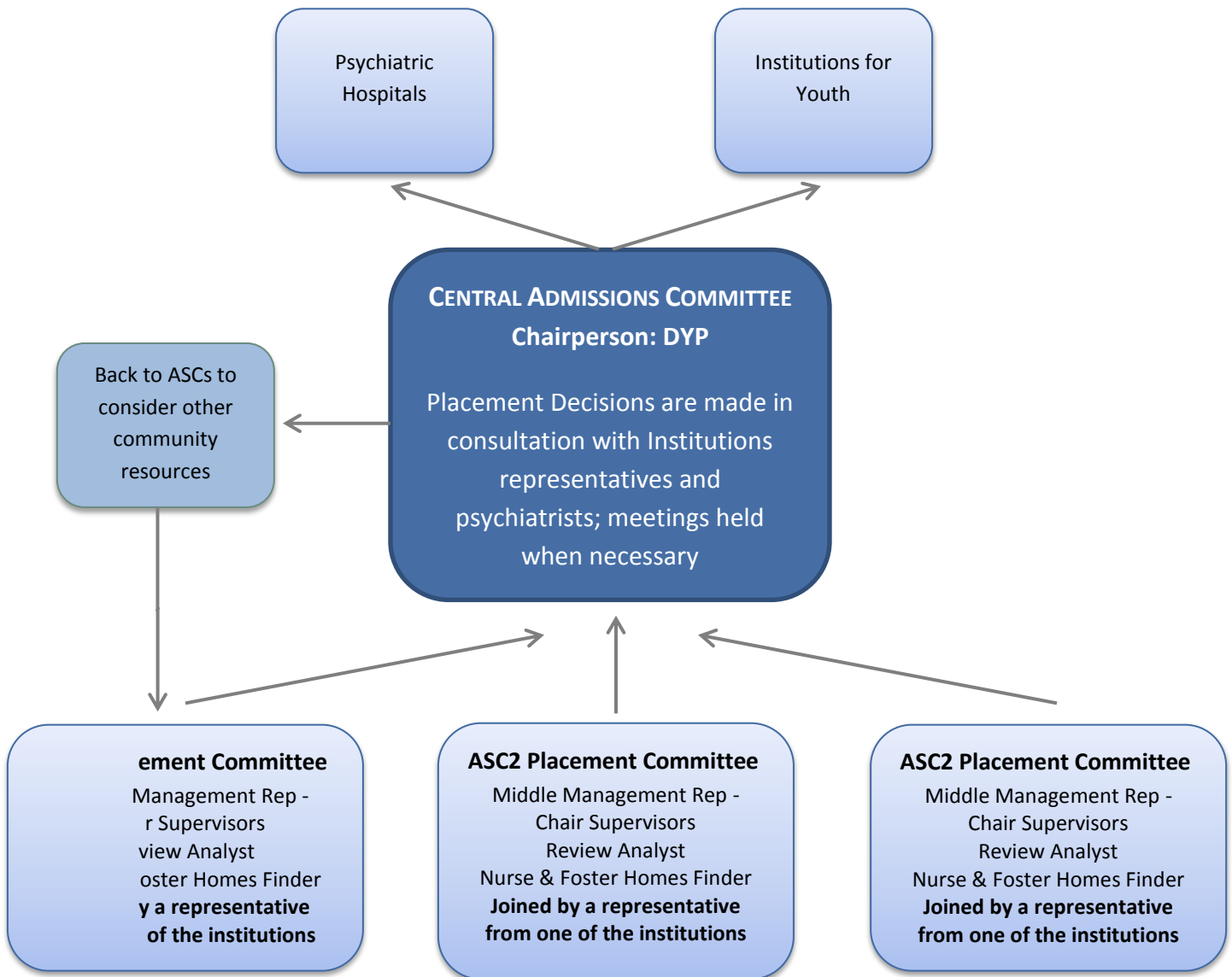


**Notes:**

1. Cases are referred to the Central Committee after conferencing at the ASC's Placement Committee
2. All relevant documents must be sent to the Central Committee prior to the case discussion
3. The Central Committee meets weekly and the waiting period for presentation at the Committee is 6-8 weeks
4. Referring workers present the case in person at both the ASC Placement Committee and the Central Admissions Committee.

ASC=Area Service Centre  
 SSC=Social Service Centre  
 DYP=Director of Youth Protection  
 RRD=Resource Development Division

**FIGURE 3: STRUCTURE OF DECENTRALIZED ADMISSIONS COMMITTEE**

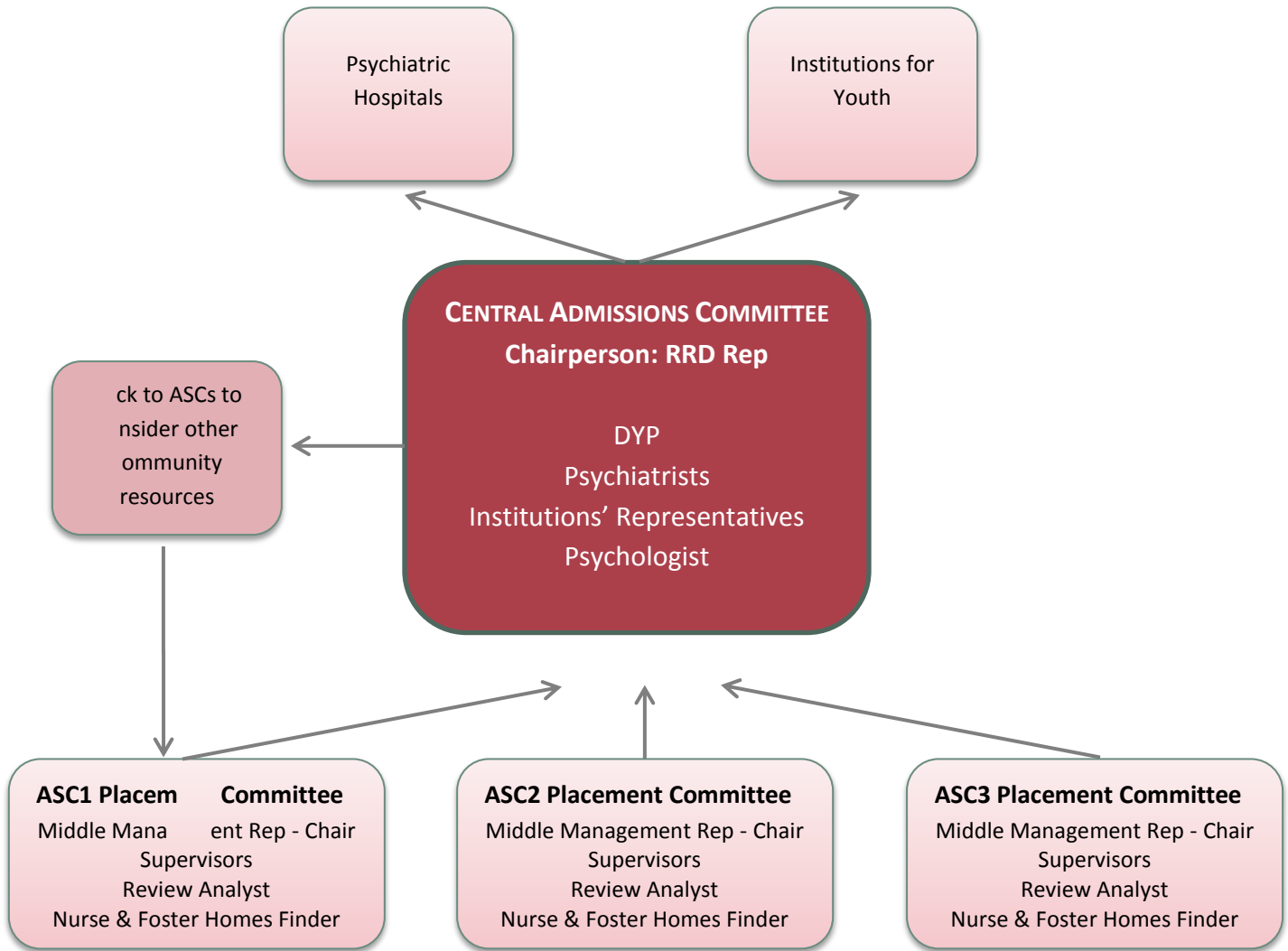


**Notes:**

1. Referrals can be discussed at the ASC Placement Committees with relevant documents pending
2. The ASC Placement Committees meet every two weeks; there is no waiting period for presenting
3. There are no regular meetings of the Central Committee; cases are processed by the Central Committee's chair as soon as the documentation is received from the referring workers
4. Referring workers present the case in person at the ASC Placement Committee

ASC=Area Service Centre  
 SSC=Social Service Centre  
 DYP=Director of Youth Protection  
 RRD=Resource Development Division

**FIGURE 4: STRUCTURE OF RECENTRALIZED ADMISSIONS COMMITTEE**



**Notes:**

1. Cases are referred to the Central Committee after conferencing at the ASC's Placement Committee
2. Referring workers send all relevant documents to the Central Committee for disposition
3. Referring workers present the case in person at the ASC Placement Committees but not at the Central Committee

ASC=Area Service Centre  
 DYP=Director of Youth Protection  
 RRD=Resource Development Division  
 SSC=Social Service Centre